

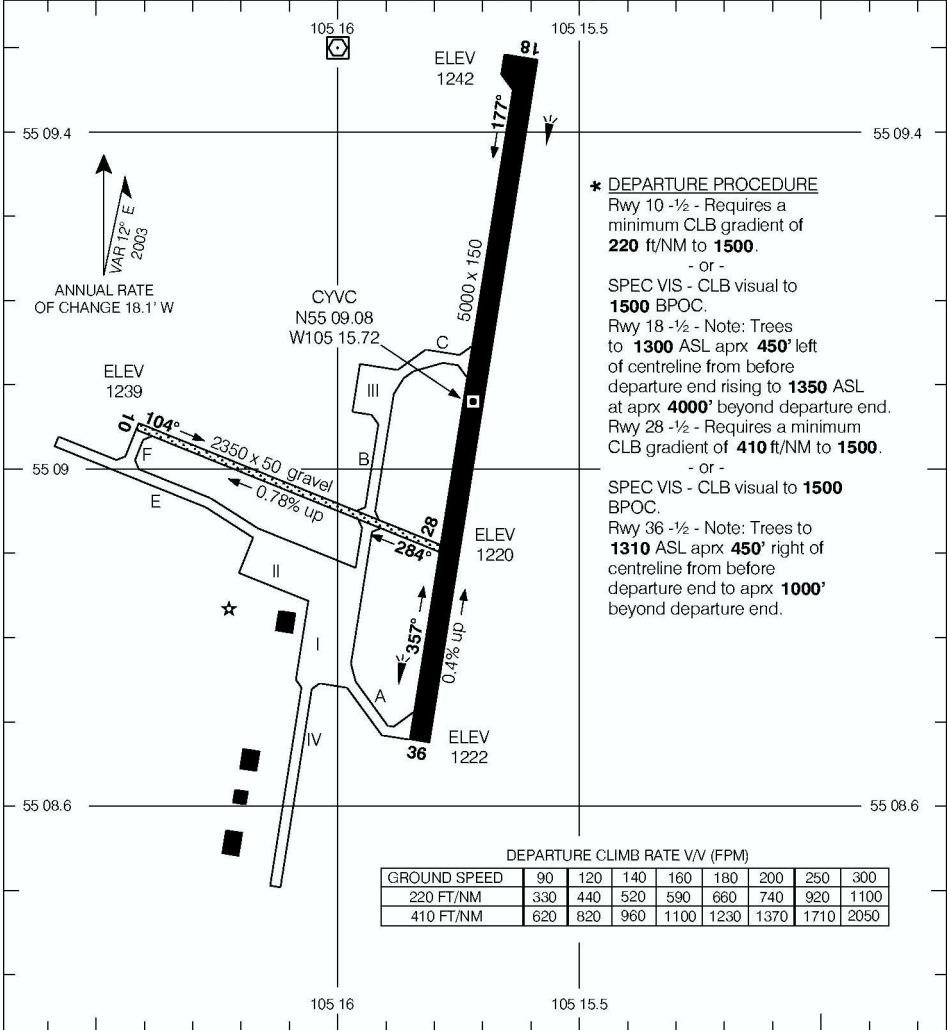
AERODROME CHART

LA RONGE (BARBER FIELD)
LA RONGE SK

RADIO
122.2 (MF 5 NM)

DECLARED DISTANCES

	18	36	10	28
TORA	5000	5000	2350	2350
TODA	6000	6000	2350	2350
ASDA	5000	5000	2350	2350
LDA	5000	5000	2350	2350



*** DEPARTURE PROCEDURE**
Rwy 10 -½ - Requires a minimum CLB gradient of **220 ft/NM to 1500**.
- or -
SPEC VIS - CLB visual to **1500 BPOC**.
Rwy 18 -½ - Note: Trees to **1300 ASL** aprx **450'** left of centreline from before departure end rising to **1350 ASL** at aprx **4000'** beyond departure end.
Rwy 28 -½ - Requires a minimum CLB gradient of **410 ft/NM to 1500**.
- or -
SPEC VIS - CLB visual to **1500 BPOC**.
Rwy 36 -½ - Note: Trees to **1310 ASL** aprx **450'** right of centreline from before departure end to aprx **1000'** beyond departure end.

DEPARTURE CLIMB RATE V/V (FPM)

GROUND SPEED	90	120	140	160	180	200	250	300
220 FT/NM	330	440	520	590	660	740	920	1100
410 FT/NM	620	820	960	1100	1230	1370	1710	2050

TAKE-OFF MINIMA

Rwys 10, 18, 28, 36: *

SCALE IN FEET



AERODROME CHART
EFF 8 JUN 06

CHANGE: Editorial

LA RONGE SK
LA RONGE (BARBER FIELD)
NAD83

© 2006 Her Majesty The Queen In Right of Canada, Department of Natural Resources All rights reserved. Source of Canadian Civil Aeronautical Data © 2006 NAV CANADA All rights reserved.