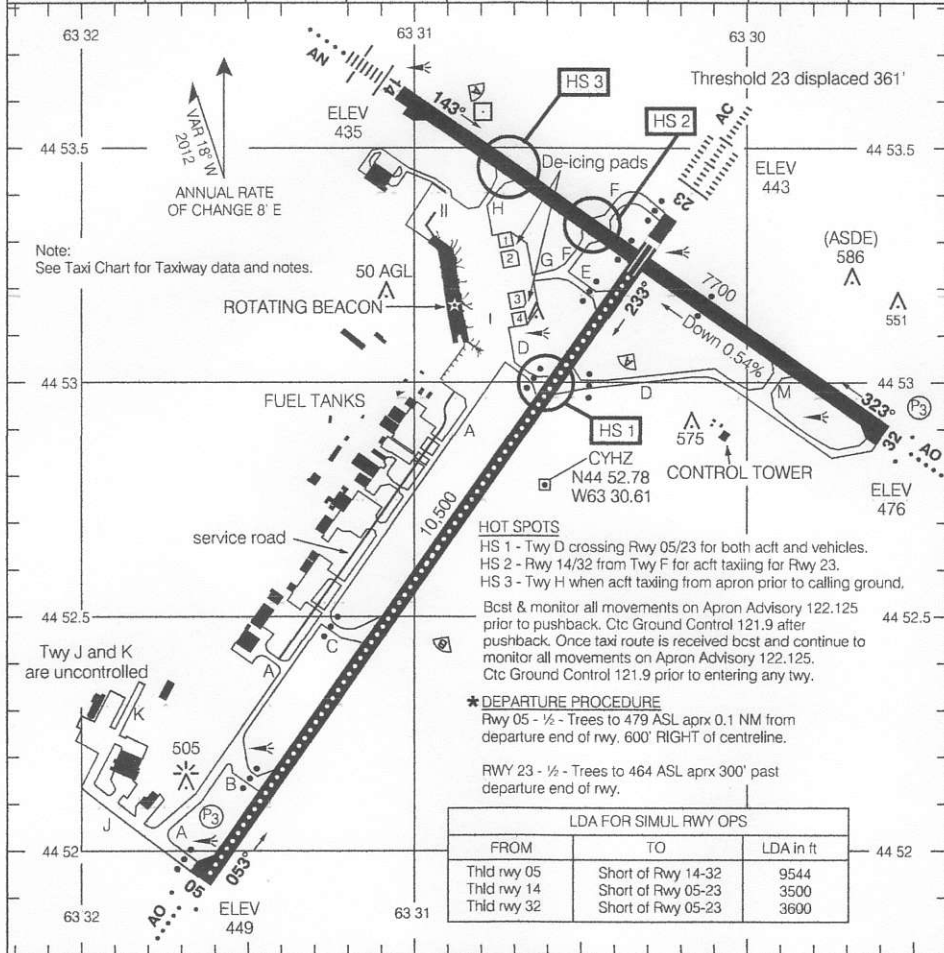


## AERODROME CHART

ATIS - 121.0	CLNC DEL - 123.95 APRON - 122.12 GND - 121.9 275.8	TWR - 118.4 236.6	TML - 119.2
--------------	--	-------------------	-------------

DECL	DISTS	05	23	14	32				
TORA		10500	10500	7700	7700				
TODA		11189	11189	8684	8684				
ASDA		10500	10500	7700	7700				
LDA		10500	10139	7700	7700				



Note:  
See Taxi Chart for Taxiway data and notes.

**HOT SPOTS**

- HS 1 - Twy D crossing Rwy 05/23 for both acct and vehicles.
- HS 2 - Rwy 14/32 from Twy F for acct taxiing for Rwy 23.
- HS 3 - Twy H when acct taxiing from apron prior to calling ground.

Bcst & monitor all movements on Apron Advisory 122.125 prior to pushback. Ctc Ground Control 121.9 after pushback. Once taxi route is received bcst and continue to monitor all movements on Apron Advisory 122.125. Ctc Ground Control 121.9 prior to entering any twy.

**\* DEPARTURE PROCEDURE**

Rwy 05 - 1/2 - Trees to 479 ASL aprx 0.1 NM from departure end of rwy. 600' RIGHT of centreline.

Rwy 23 - 1/2 - Trees to 464 ASL aprx 300' past departure end of rwy.

**LDA FOR SIMUL RWY OPS**

FROM	TO	LDA in ft
Thld rwy 05	Short of Rwy 14-32	9544
Thld rwy 14	Short of Rwy 05-23	3500
Thld rwy 32	Short of Rwy 05-23	3600

**RUNWAY LEVEL OF SERVICE****RVO**

Rwy 14, 23: RVR 1200  
Rwy 05, 32: (1/4sm)

**LVO**

Rwy 23: RVR 600

**TAKE-OFF MINIMA**

Rwys 05, 23: \*  
Rwys 14, 32: 1/2

**SCALE IN FEET**